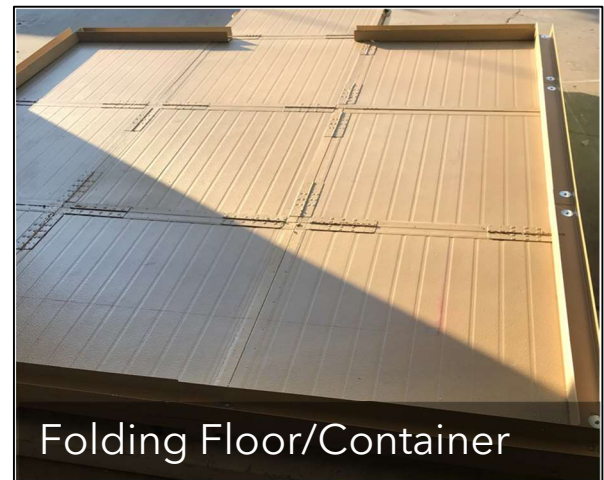


ICE CUBE WALK-IN REFRIGERATOR / FREEZER



Product # LC-IC-12-2022

PORTABLE, EASY ASSEMBLY, HIGHLY INSULATED

Constructed with top quality materials Life Cube Mobile is designed to provide a wide spectrum of users with advantages not found in products marketed by competitors:

- Generous interior (12' x 12' ft., 6-7 ft. headroom)
- 100 linear feet of rugged fabric shelving, depth from 1' to 3', reinforced
- Easy and fast set-up time (2 hours) with provided kit. No Equipment Needed
- Shore Power or MRU
- Proprietary fire-retardant industrial coating for power-wash capabilities, inside and out
- Interior space and Shed Roof include weather-proof air-lock seals

For specifications, available options, pricing and other information, contact our specialists

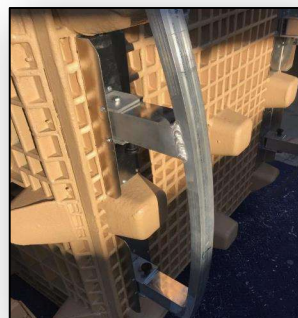
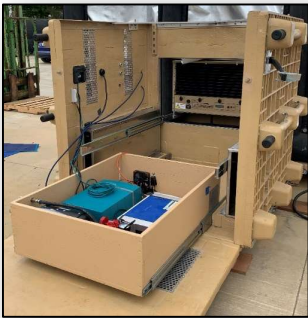
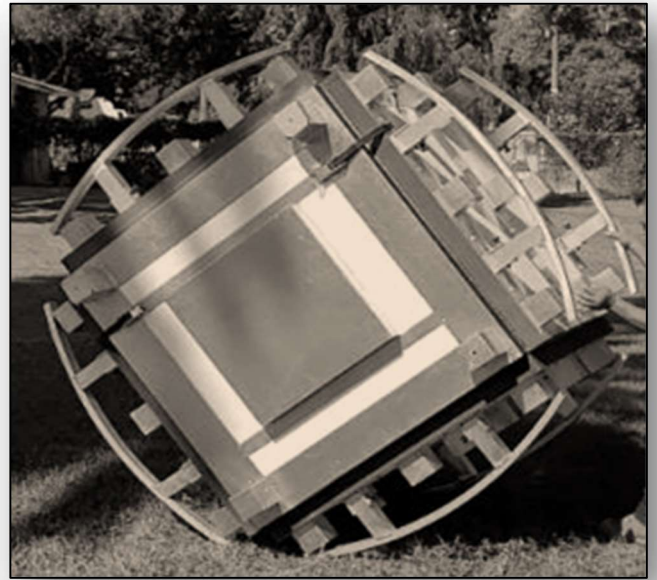
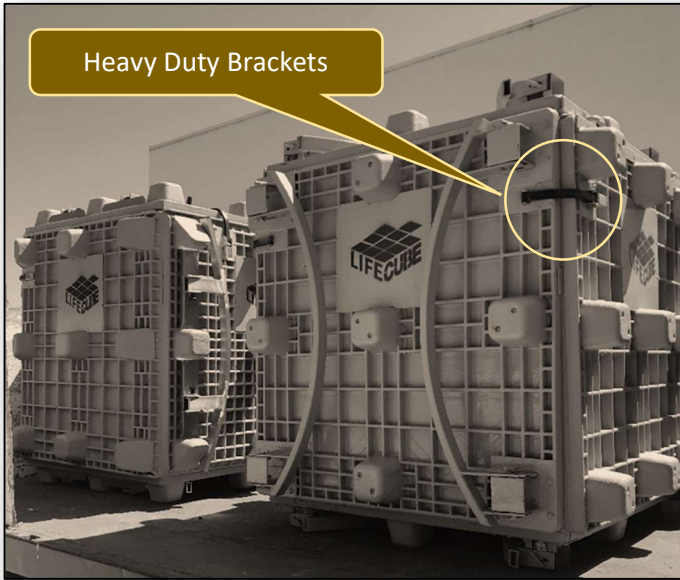
www.lifecubeinc.com

Tel: 805-708-6141

Email: info@lifecubeinc.com

Federal Contractor Cage Code 61YX6

SHIPPING CONTAINERS ROLL, OPEN, UNFOLD. NO EXTRA TOOLS OR EQUIPMENT REQUIRED



Utility Cube with MRU, Floor Cube & Infrastructure, Shipping Cube with Hoops includes R-VIPs

Pack-out size	4 cubes 5'x5'x5'	
Usable internal volume	958 Cu Ft	
Internal and external dimensions	Internal: 11.3' x 11.3' x 7.5'	External 12'L x 12'W
No. of pallets for shipment	3 Pallets + 1 Pallet for the MRU	
Weight and size per pallet	5'X5'X5' - 1000 lbs	
Transportation footprint	Truck deck size 8' x 25'	
Erected footprint	12'W X 12'L X 8'H (8' at front, 7' rear)	
Cooling capacity – Refrigeration	35°F in 15 minutes	Local Weather 71F
Cooling capacity - Freezing	0°F in 2 hours & 71F Ambient.	Sub-Zero Test Below
Performance Test	Up to 127°F surface temp,	Interior remained 1°F
Number of panels	22 / Walls, 9 / Roof, 2 / Door	
Time to erect	2 hours	
Manpower to erect	2 or 3	
Roller rails	Hoop-style mobility package	
Forklift pockets	2-sided access on each pallet	
Latching details	New heavy-duty draw latches	
Power consumption	4.4 kw (per hour)	
Volts/Amps/Watts	240v Phase1 = 6.8amps Phase2 = 6.2amps Phase3 = 5.4amps	
	1600watts + 1500watts + 1300watts	
	4400watts = 4.4kw @ 3Phase 240vac	



Power Ports

Exterior Temperatures Do Not Impact Interior Temperature
 Power Consumption is 50% less than Prior Models

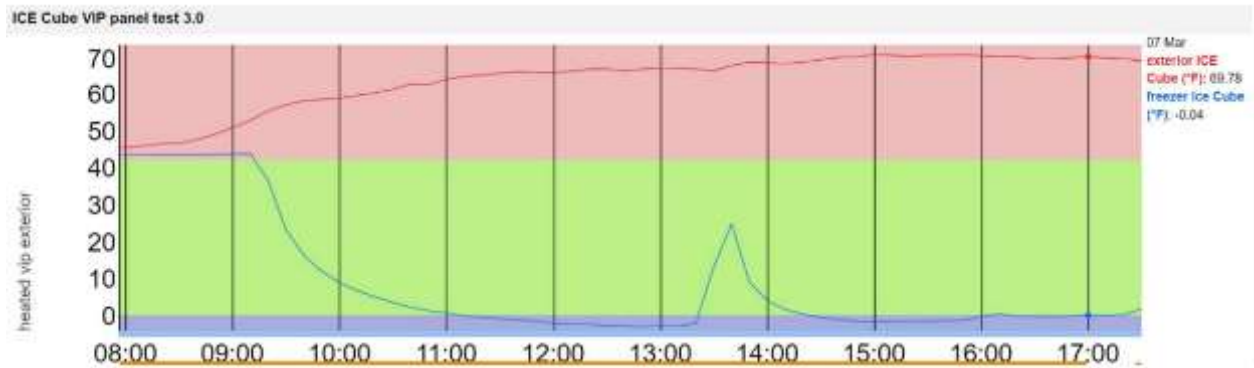


Sun Exposure on Exterior

Interior of Sun Exposed Panel

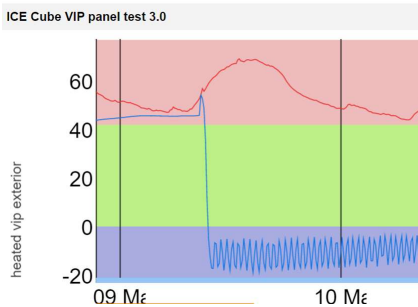
Exterior Panel in the Shade

Interior of Shaded Panel



MRU Turned On

MRU Defrost Cycle set for every 4 hours



This test shows sub-zero temperatures maintained in spite of ambient temp range. Cycle time and other variables can be adjusted to test other conditions.