

**RUGGED • RELIABLE
INSTANT SHELTER**

"As the end-user of temporary shelters in the most austere conditions, the suite of Life Cube products would have made our logistic support vastly easier, nimbler, and more capable." 30-Year Navy Seal Captain

OVERVIEW & CAPABILITIES

Life Cube designs and develops new shelter technology, offering products for disaster preparedness and response, international migration, emergencies, medical isolation, as well as recreation.
2024: Ability to deliver LC-8 (the 64 sq. ft. model) at rate of thousands per month. Other products TBA.

PRODUCT LINE

64 SQ FT MULTI-PURPOSE SHELTER for GROUND or TRUCK with BUOYANT FLOOR

Fits in 2 duffle bags, 10-minute deployment. Spans the truck bed rails. Buoyant, tether to dock.



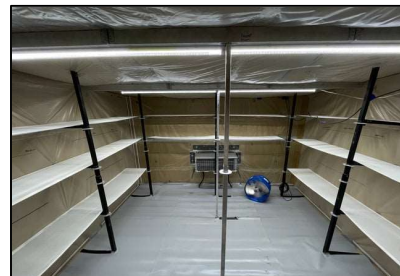
160 SQ FT SHELTER

1st Responders and Command & Control



144 SQ FT PORTABLE WALK-IN

Refrigerator and Freezer



CLIENTS AND PARTNERS

Clients: Combat Capabilities Development Command; U.S. Army Natick Soldier Systems Center, American Red Cross, FBI, Convoy for Hope, and individuals.

Partners and authorized resellers: Northwest Emergency Management (NWEM), 100% Veteran Owned and Operated and a Service-Disabled Veteran Owned Business, with clearances and S. Dakota EM certifications. Arrow Camper/Truck Accessories and Penske Rental Agency: 6200 Hollister Ave. Goleta, CA

COMPANY

- **Registered company name:** Life Cube Inc. Incorporated in 2006, California **Corporation type:** C Corp.
- **D-U-N-S number:** 011307864 **Federal Contractor Cage Code:** 61YX6
- **NAICS:** 314910, 624221, 423740, 493120, 423450

Contact: info@lifecubeinc.com **Website:** www.lifecubeinc.com

6200 Hollister Ave, Goleta, CA 93117, (O) +1 805-964-4445 | (M) +1 805-705-9179