

**RUGGED • RELIABLE
INSTANT SHELTER**

Attention Campers and Overlanders!

Introducing the Patented

LC-8 for Ground, Truck, Water, & Ice

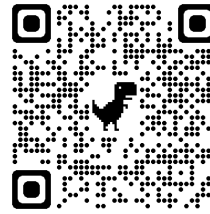
What's in your backseat?

INTRODUCING THE LC-8: The most versatile tent ever

Our most recent shelter innovation is ideal for all terrains; camping on the ground, truck, lake, or ice. Provides shelter, privacy, and adjustable mattress. Inflate once, holds air for months.

KEY BENEFITS

- Versatile: for GROUND or TRUCK, or ICE with BUOYANT FLOOR
- Sets up in only 15 minutes
- Interior room to walk around, 64 sq ft.
- Easy reach to load provisions
- Sleeps 2 adults + 4 kids
- Elevated from dirt, mud, bugs, rodents, animals, etc.
- Adjustable floor firmness – no extra mattress needed.
- Compact storage, easy to transport: 2 bags fit in car trunk or backseat.



More Info.



Fits in 2 duffle bags
15-minute deployment



Spans the truck bed rails



Buoyant, tether to dock



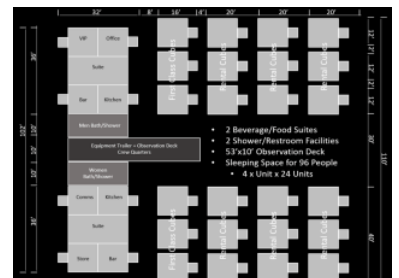
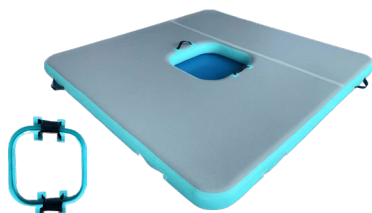
Seen here with
Environmental Control Canopy

COMPANY & Featured Products

Life Cube designs and develops advanced technology shelter systems. Clients include: Combat Capabilities Development Command, U.S. Army Natick Soldier Systems Center, U.S. Air Force, American Red Cross, FBI, Convoy of Hope, etc.



2024 Ice Fishing Model



Ask about a
Community of Cubes

Contact: info@lifecubeinc.com | **Website:** www.lifecubeinc.com | Starting at \$3,500

Life Cube, Inc. | 6200 Hollister Ave, Goleta, CA 93117 | +1 805.964.4445