



**RUGGED • RELIABLE
INSTANT SHELTER**

Attention Campers and Overlanders

Introducing the Patented **LC-8 for Ground, Truck, Water & Ice**

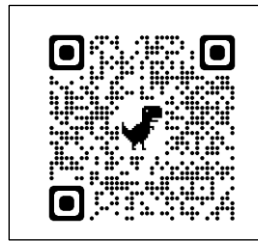
What's in your backseat?

INTRODUCING LC-8: The most versatile tent ever

Our most recent shelter innovation is ideal for all terrains; camping on the ground, truck, lake, or ice. Provides shelter, privacy and adjustable mattress. 2024: Ability to deliver LC-8 at rate of thousands per month. Inflate once, holds air for months.

KEY BENEFITS

- Versatile: for GROUND or TRUCK, or ICE with BUOYANT FLOOR
- Quick Set Up
- Interior room to walk around, 64 sq ft.
- Easy reach to load provisions
- Sleeps 2 adults + 4 kids
- Elevated from mud, bugs, rodents, dirt...
- No extra mattress needed. Adjust the floor to suit.
- Small to store, fits in 2 bags
- Options: Environmental Control Canopy (add \$500) or Insulation lining and rugged slash-proof fabric (add \$900)
- Gift with purchase – Unique Rechargeable Portable Solar light



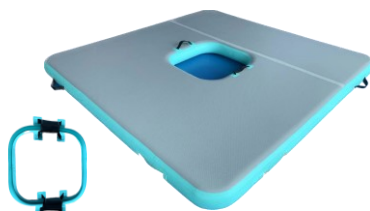
More Info

COMPANY & Featured Products

Life Cube designs and develops new shelter technology. Clients: Combat Capabilities Development Command; U.S. Army Natick Soldier Systems Center, American Red Cross, FBI, Convoy for Hope, etc.



2024 Ice Fishing Model



Fits in 2 duffle bags
10-minute deployment



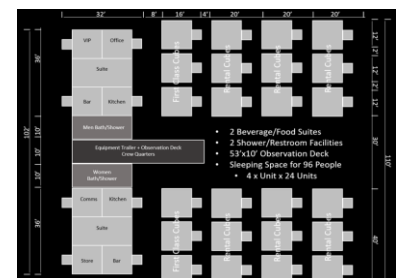
Spans the truck bed rails



Buoyant, tether to dock



Seen here with
Environmental Control Canopy



Ask about a
Community of Cubes

Contact: info@lifecubeinc.com **Website:** www.lifecubeinc.com **Purchase Here** Starting at \$2750
Michael Conner, 6200 Hollister Ave, Goleta, CA 93117, (O) +1 805-964-4445 | (M) +1 805-708-6141